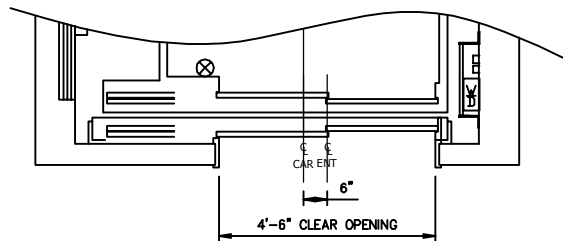
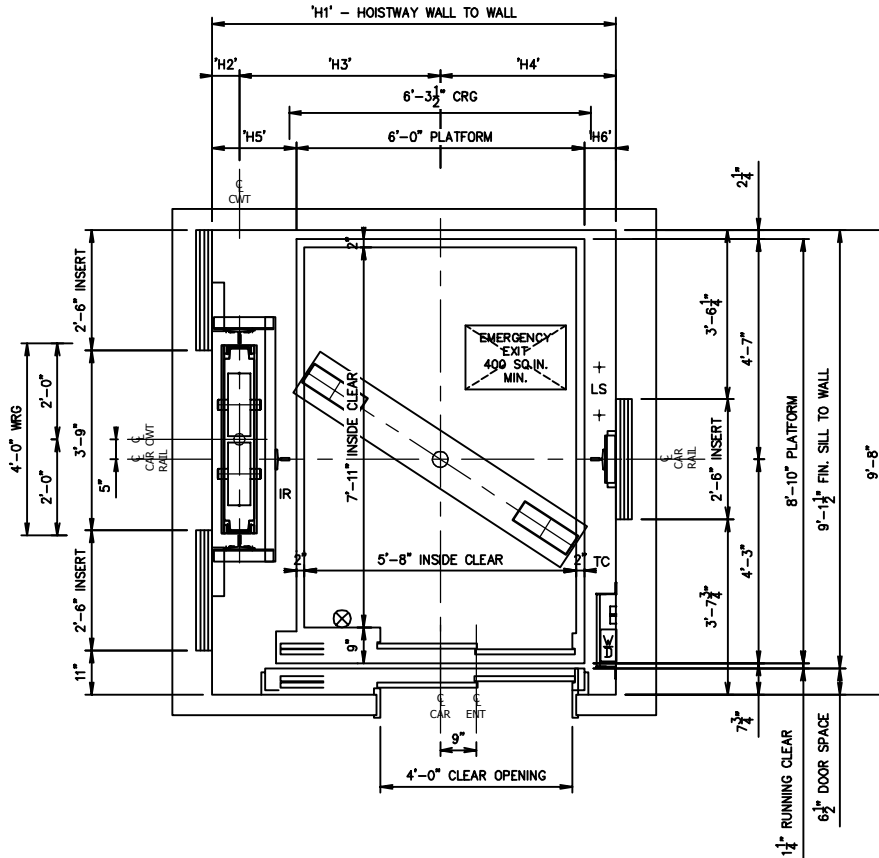


HOISTWAY / COUNTERWEIGHT DIMENSIONS

| CONFIGURATION | | H1 | H2 | H3 | H4 | H5 | H6 | H7 | H8 | H9 | H10 | H11 |
|---------------|------------|-------|---------|-----------|--------|-------|-----|----|----|----|-----|-----|
| SEISMIC ZONE | CWT SAFETY | | | | | | | | | | | |
| ✘ | ✘ | 8'-5" | 6 3/4" | 4'-2 1/4" | 3'-8" | 1'-9" | 8" | / | | | | |
| ✘ | ✓ | 8'-9" | 8 1/2" | 4'-4 1/2" | 3'-8" | 2'-1" | 8" | | | | | |
| ✓ | ✘ | 9'-0" | 9 1/2" | 4'-4 1/2" | 3'-10" | 2'-2" | 10" | | | | | |
| ✓ | ✓ | 9'-2" | 10 1/2" | 4'-5 1/2" | 3'-10" | 2'-4" | 10" | | | | | |



MRL
 SINGLE CAR FRONT (HOSPITAL SHAPE) 4500 lbs.
 HOISTWAY PLAN
 SPEED 200, 350 FPM
 CHAIN COMPENSATION(IF REQ'D)

WARNING:
 FUJITEC PROPRIETARY INFORMATION
 Reproduction and/or use of all or any part
 of the page, drawing or information herein,
 without the express written permission of
 Fujitec America, Inc., is strictly prohibited
 by law.
 VIOLATORS WILL BE PROSECUTED

FUJITEC AMERICA, INC.

TITLE: MRL STD. LAYOUTS
 PREPARED: M.SOLOMONOV DATE: 06/17/16
 APPROVED: R.BRUN DATE: 06/17/16

MANUAL NO.
 SE-G-038

REV:
 PAGE:
 16